

# Outdoor Trek Lite Retractor

## Product Parts

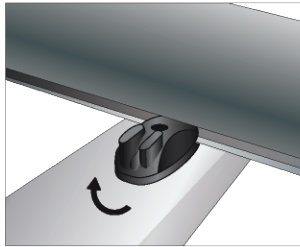
- 1 - Base Unit (with graphic installed)
- 2 - Vertical Pole
- 3 - Feet (x2)
- 4 - Stakes (x4)



## Display Set-Up

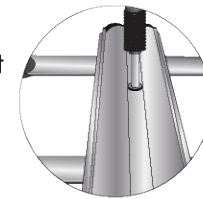
### Step 1

Align hole on the bottom of the Base Unit (1) to the post on the center of the foot (3). Turn each knob clockwise to lock foot into place on Base Unit. Repeat for second foot.

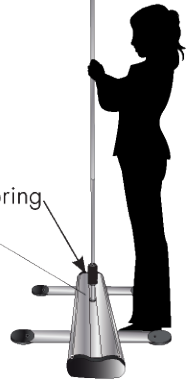


### Step 2

Connect the Shock-Cord Vertical Pole (2) sections together and insert the spring end of the Vertical Pole into the receptacle on the Base Unit (1).



spring



### Step 3

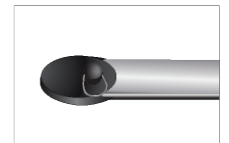
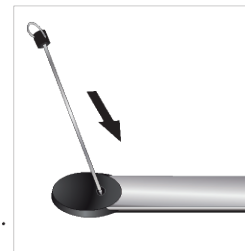
Stand facing the back of the Base (1) and gently lift the Snap Banner Rail (2) up. Gently tilt the Base back if needed to attach the Telescoping Pole (3) top connector into the rear groove on the Snap Banner Rail where the "insert" sticker is located.



**Repeat Step 3 to display second banner.**

### Step 4

If displaying outside, retractor can be secured using Stakes (4). Push Stake through hole located on foot (3).



## Storage and Care

Place all product parts into Carry Case and store in a cool dry location. To clean non-graphic hardware, wipe with a damp cloth.

# Outdoor Trek Lite Retractor

## Banner Install/Replacement ONLY

### Product Parts

- 5 - Banner Snap Rail
- 6 - Replacement Graphic
- 7 - Tension Pin\*

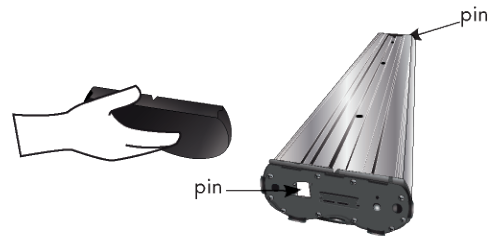


Base Unit can be installed with one or two Graphic Banners.  
It's recommended that two people work to replace the graphic.

### \*Do Not Pull Pin Unless Directed

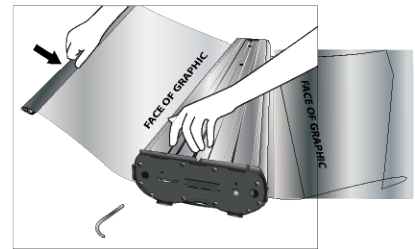
#### Step 1

Locate the Tension Pin (7) inside the Base Unit's (1) end caps. Set it aside but within reach. An installed graphic will only be drawn back into the Base Unit when the Pin is NOT inserted.



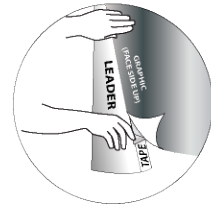
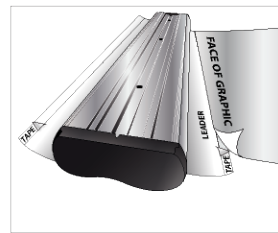
#### Step 2

Keep the Base Unit (1) still and gently pull the previously installed graphic out with its Snap Rail (5). Make sure to pull it out enough to expose the leader, where the graphic is attached. Once it's fully extended, keep it taut and insert the Tension Pin (7) into the correct hole. A two-inch finishing nail can usually substitute for the Pin. Only once the tension is gone, slowly release your hold on the graphic.



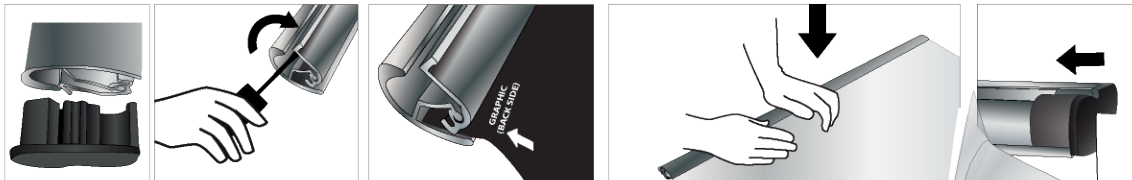
#### Step 3

Remove the installed graphic from the leader carefully so that neither is damaged. Keep in mind the way the banner's print faces, and line up the Replacement Graphic (6) in the same way on the leader. Use strong tape to secure the graphic to the leader.



#### Step 4

Remove both end caps from the original graphic's Snap Rail (5) and pry it open. Take note of where the graphic is inserted and replace it with the Replacement Graphic (6). Snap the Rail shut and re-add its end caps.



#### Step 5

Get a very firm grip on the Replacement Graphic (6) and carefully pull out the Tension Pin (7). Once tension returns, slowly allow the graphic to retract into the Base Unit, guiding it to stay straight and even.



#### Step 6

Repeat steps 1-5 for any other Replacement Graphics (6), then re-add the Base Unit's (1) end caps. Store the Tension Pin(s) (7) where they were originally attached to the Base Unit (1).